

DUXBURY BEACH RESERVATION, INC.



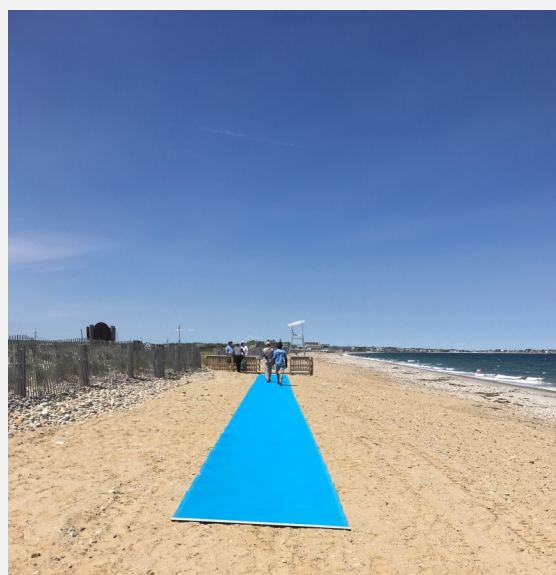
Project Access for All

What is Project Access for All?

Project Access for All is Duxbury Beach Reservation's new initiative to make Duxbury Beach more accessible. 26,500 individuals in Plymouth County alone live with conditions that limit their mobility, and the beach hosts more than 2,000 guests daily from around the world. We believe that all of these guests should be able to access Duxbury Beach regardless of their ability levels, and that you can play a role in making this dream a reality!

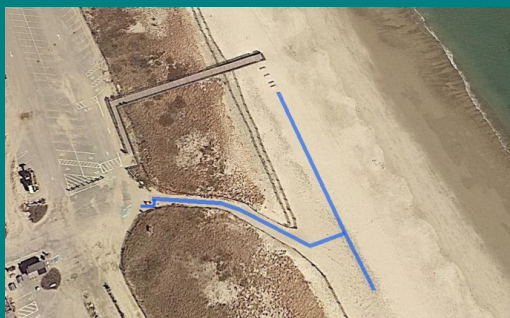
Project Benefits

- **Long-lasting impact**—mats will provide access for at least 10 years to come
- **Flexibility**—mats come in segments so if access changes, mats can be manipulated to fit in other locations
- **Simplicity**—mats are easy to set-up, care for, and store
- **Safety**—wooden ramps can become slippery when wet, mobility mats are textured for a no-slip grip
- **Environmentally Conscious**—mats are made of 100% recycled materials

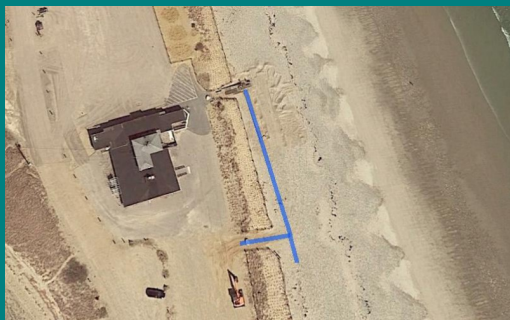


Proposed Access to Duxbury Beach

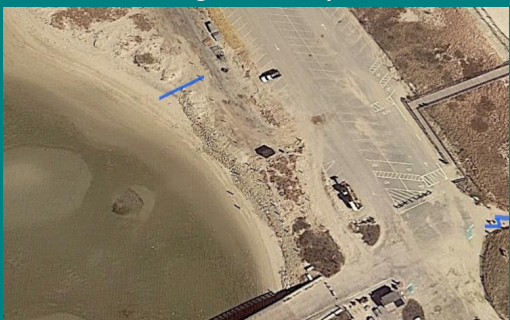
Resident Parking Lot to Oceanside Beach



Duxbury Beach Park to Oceanside Beach



Resident Parking Lot to Bayside Beach



A history of Duxbury Beach and Accessibility

In the past, Duxbury Beach has offered access for wheelchair users via three wooden ramps at different spots on the beach and beach wheelchairs so more visitors can access and enjoy the water. During summer 2018, the Reservation received a new beach wheelchair with floats from the Arc of Greater Plymouth.

Unfortunately, the nor'easters that slammed Duxbury Beach in March 2018 left two of the handicap accessible ramps unusable. This is when DBR decided another solution must be found.

Following the nor'easters, Duxbury Beach Reservation had the opportunity to test a more adaptable type of ramp called a mobility mat. The mat was placed over one of the paths leading from the parking lot to the beach, and it was a huge success. With your help we can make these improved access paths an annual fixture on Duxbury Beach.

Winter 2019, Duxbury Beach Reservation submits a permit to MA Fish and Wildlife to employ mobility mats under the MA Endangered Species Act.

Spring DBR purchases and installs mobility mats for three handicap accessible pathways.

Summer Duxbury Beach visitors enjoy increased access to more parts of the beach!

Fall Mobility mats are removed and stored to decrease risk of damage from winter storms and extend the usefulness lifespan of the mats.

Design Features & Properties

MATERIAL CHEMICAL PROPERTIES:

UV and weather resistance:	Excellent
Impervious to the effects of salted water	Excellent
Micro-Organism resistance:	0.4%
Water permeable & Moisture regain:	Excellent
Acid, Alkali, Solvent, Urea resistance :	

MATERIAL MECHANICAL RESISTANCE:

LATERAL Tensile Strength (for vehicle crossing):	13442 lb/ft
LENGTHWISE Tensile Strength (warp direction):	200 kN/m (20 t/m)
Elongation at break %:	8065 lb/ft
Compression:	120 kN/m (12 t/m)
	34%
	1740 psi - 12 Mpa (N/mm ²)

MATERIAL THERMAL PROPERTIES:

Useable Temperature:	-140°F (-40°C) / 176°F (+80°C)
Softening Temperature:	428°F (220°C)
Melting Temperature:	500°F (260°C)
Degradation Temperature:	572°F (300°C)
Combustion behavior:	Self extinguishing as flame is taken away

Mobi-Mat® RecPath™ 3-D structure remains cooler than wooden or flatter surfacing.

